

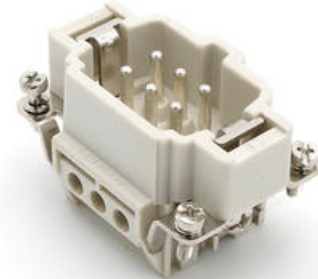
INSERTS

Series B, single and double-lever

7306.6103.0

6P male insert, 16A, 500V, screw

- 10A or 16A maximum current per contact
- Voltage up to 500 V
- Screw, spring, push-in or crimp termination
- Pole number between 6 and 108



PRODUCT DESCRIPTION

SPECIFICATIONS

Connection Thread	Screw terminal
Cross-Section Max	2,5 mm ²
Material	Polycarbonate
Materials Contacts	Silver plated copper
Number of poles	6
Operating Voltage AC / DC Max	500 V
Rated Current	16 A
Size	6B